



Southern African HIV Clinicians Society 3rd Biennial Conference

13 - 16 April 2016
Sandton Convention Centre
Johannesburg

**Our Issues, Our Drugs,
Our Patients**

www.sahivsoc.org
www.sahivsoc2016.co.za



**Counseling Support for Persons with
Rifampicin–Resistant TB Receiving Bedaquiline:
A Successful Model from Khayelitsha, South Africa
Abstract 229**

Leigh Snyman

Background

- Population ~ 500,000
- 50% live in informal dwellings
- ~200 rifampicin-resistant TB (RR-TB) cases diagnosed each year (75% HIV infected)
- 90% initiate treatment
- High seasonal migration area



Why is patient support Imperative?



2 year journey

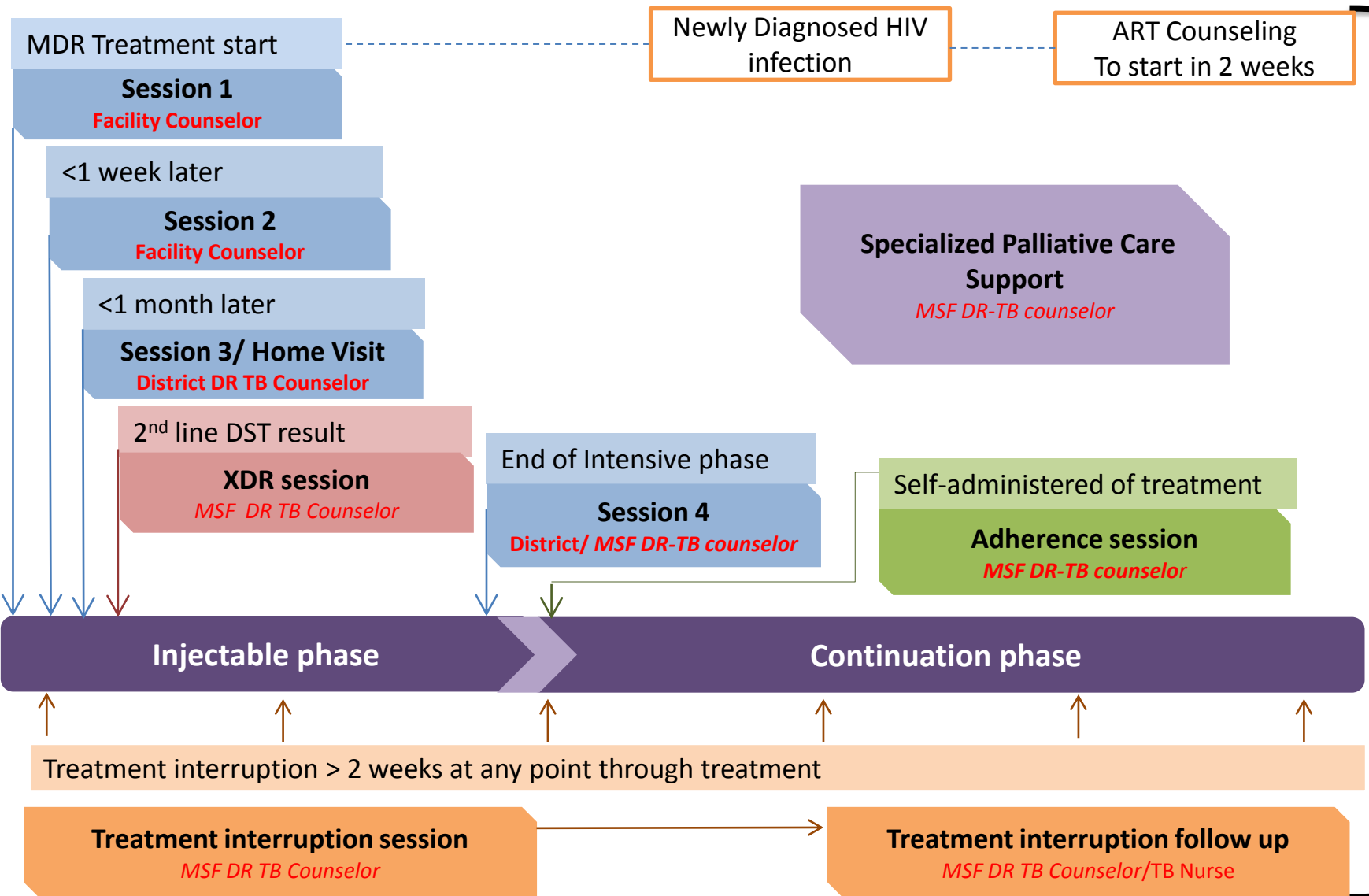


Injectable phase

Continuation phase



The Traditional khayelitsha model

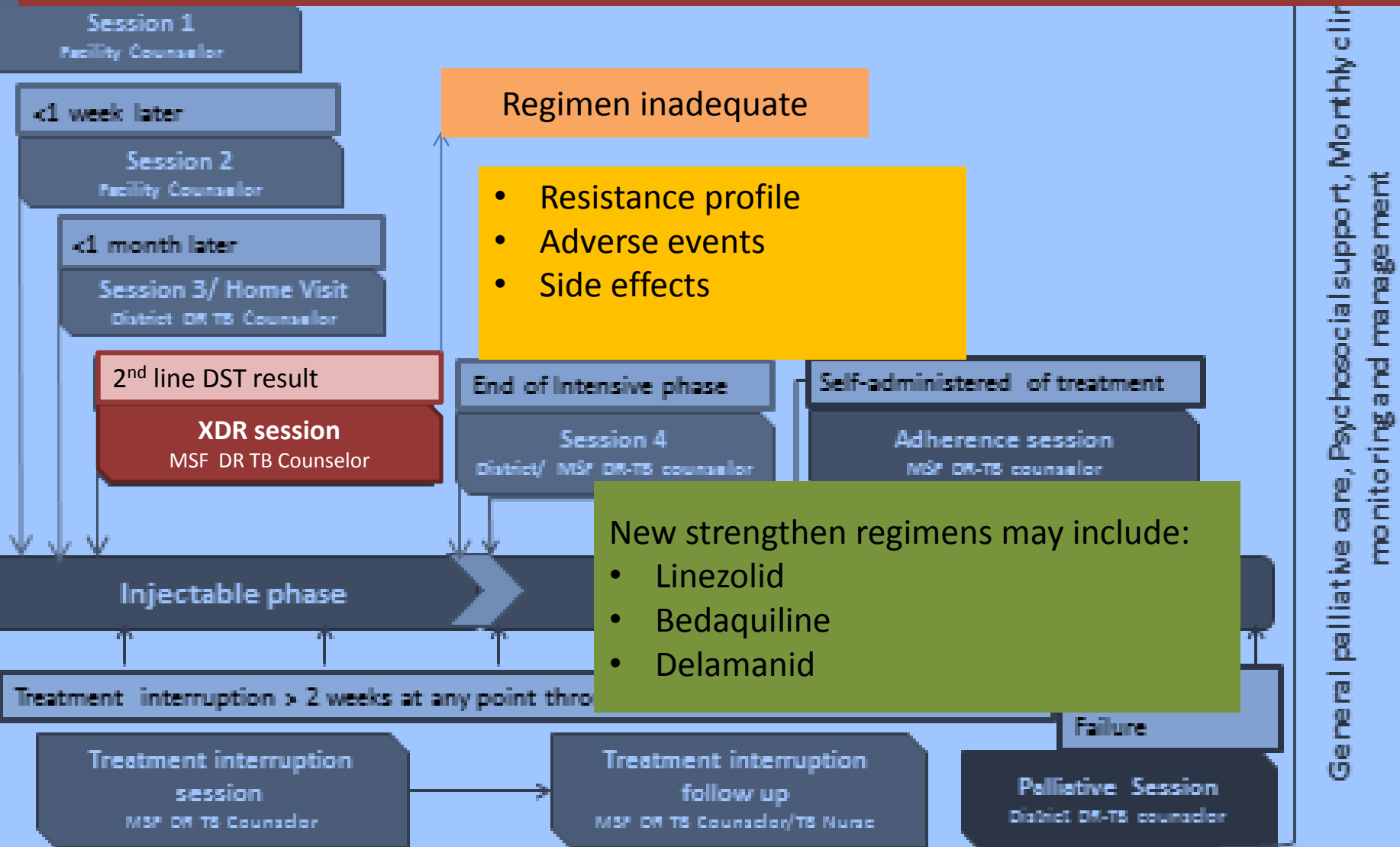


General palliative care, Psychosocial support, Monthly clinical monitoring and management



2016

Support process with new regimens



Support process

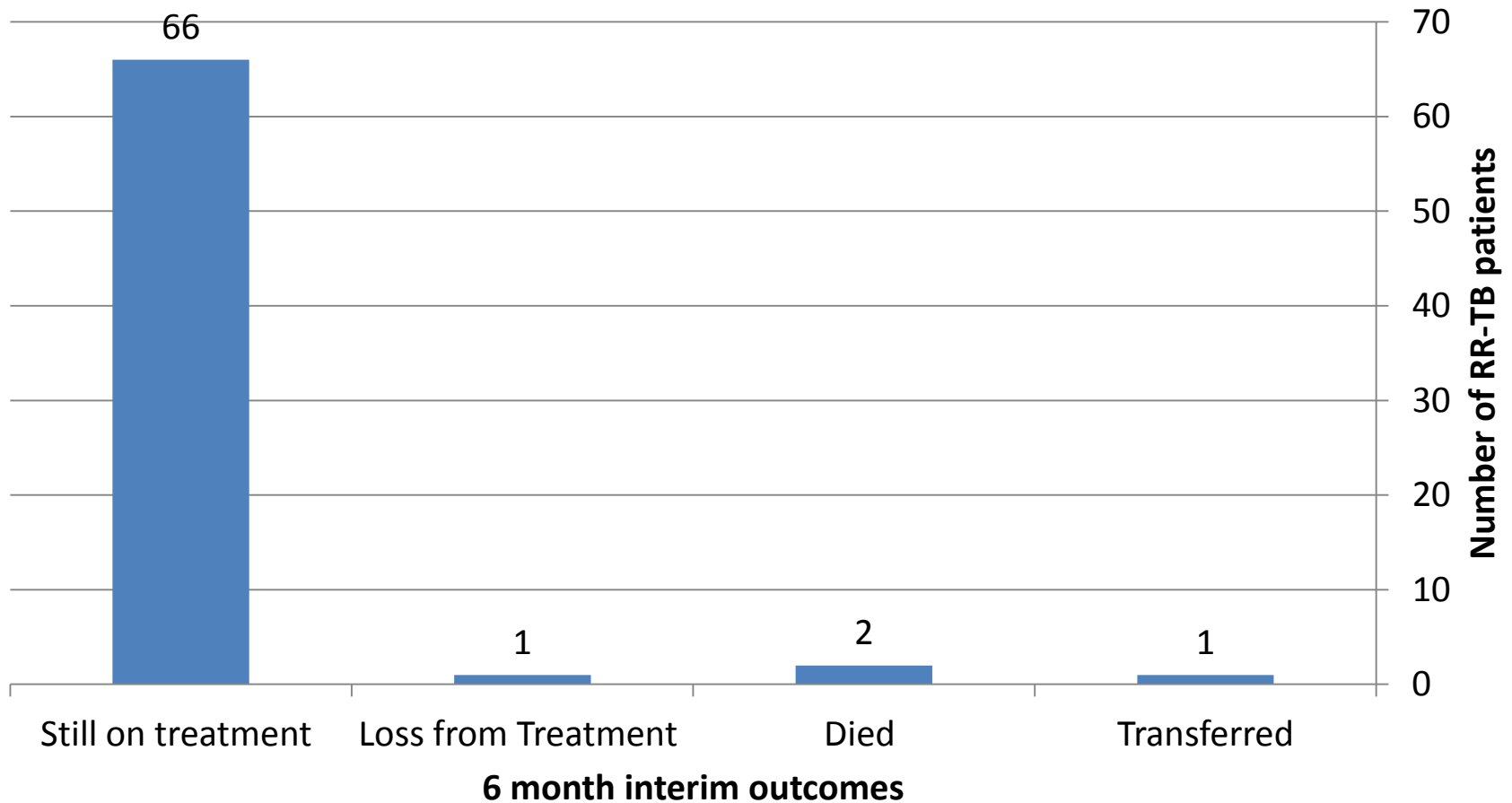
Breaking News

Consent

Support

- Break News
- Treatment literacy

Results of patients started on BDQ



Recommendation

- A comprehensive patient support approach with the introduction of new medications is essential to enhance adherence
- Adequate patient centered support requires adequate and appropriate human resources that speaks to the local context and patient needs

Resource



Médecins sans Frontières (MSF) Khayelitsha

PATIENT SUPPORT INTERVENTIONS TO IMPROVE ADHERENCE
TO DRUG RESISTANT TUBERCULOSIS TREATMENT

COUNSELLING TOOLKIT



Acknowledgements

- City and Province clinic staff
- SDR-TB patients and their families
- MSF Khayelitsha team and government structures



2016